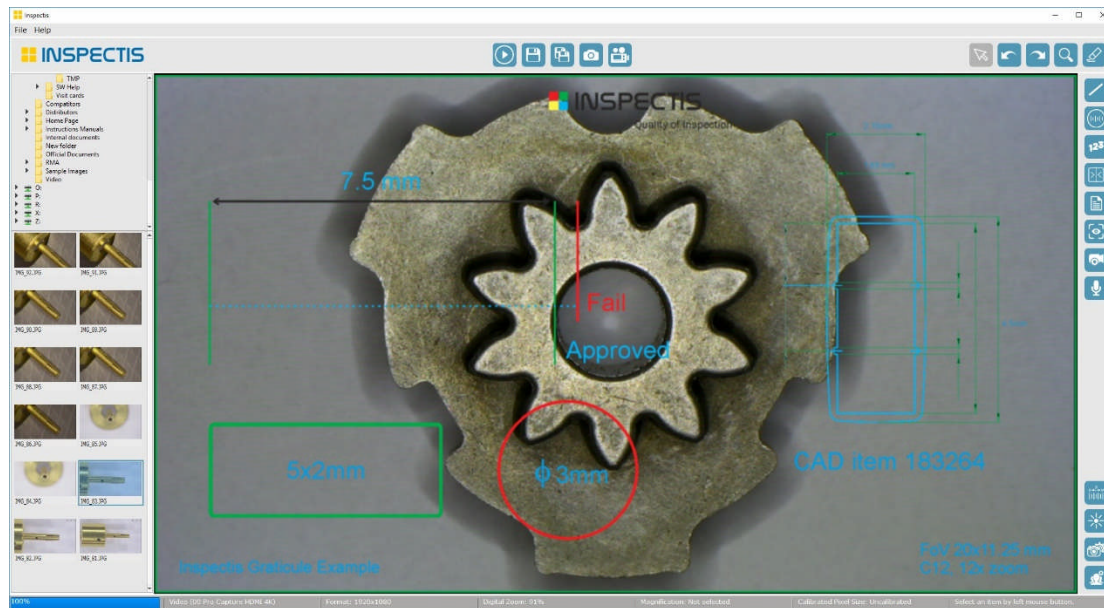


Instructions Manual

How to generate “Overlay” files for INSPECTIS

This document describes how to generate a transparent Overlay pictures to be used in INSPECTIS software. Overlay file in this document is created with Corel Draw X6 software. However, any other similar software can be used.



Defining the Field-of-View (FoV)

Before starting to make the Overlay artwork it is important to define and measure Field of View of your current Magnification.

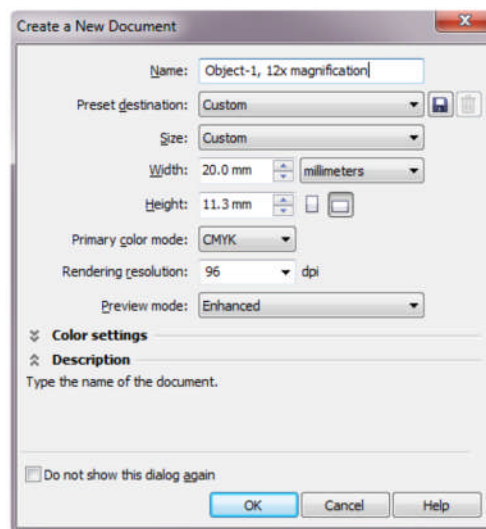
1. Setup the Digital Microscope to the required Magnification.
2. Image an accurate Ruler or Micrometer Scale with your microscope and measure Width and Height of the entire field, i.e. Field of View.

Note: Define and Calibrate this Magnification in Inspectis (refer to user’s manual of iNSPECTIS) for use together with your Overlay picture later.

Note: We recommend to enable “DISPL.” (which overlays zoom factor on top-right of the image) in your Advance Remote Camera Control device and “... save” this magnification in one of the M1 or M2 device memories for future use.

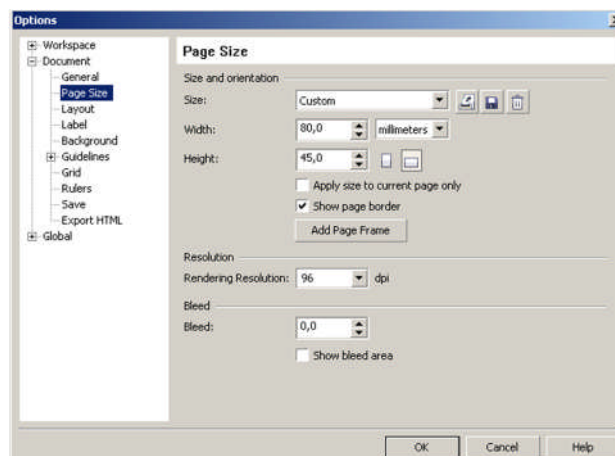
Creating a Graticule in graphic design software CorelDraw

1. Start CorelDraw and from *File->New* open a new document.
2. Set the *Size* to custom and set the Width and Height in millimetre same as FoV you measured before.
3. Set the *Rendering Resolution* to 96 dpi.
4. In this document a sample file is generated for **20x11.25mm** FoV which is field of view of C12 Digital Microscope at 12x zoom factor.

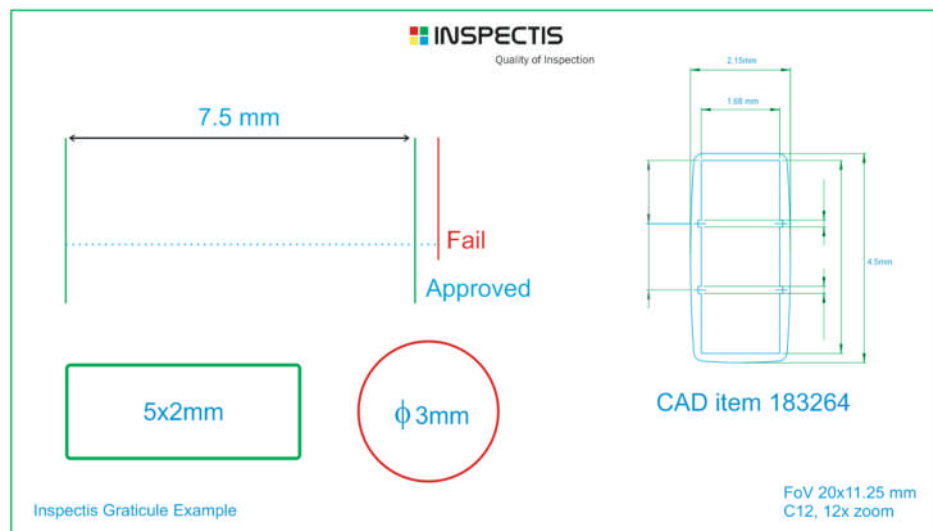


Note: Procedure of creating a new document is similar in other graphic design programs.

5. Under Tool -> Options, select Page Size and click “Add Page Frame”.



6. Draw patterns, lines, shapes, scales, etc. or import mechanical CAD drawings and add reference text if required within the frame.



Note: DXF file of a CAD drawing can be imported and used as a overlay file. To import a DXF file click *File->Import*. Make sure the scale is 1:1 and same units are used as drawing.

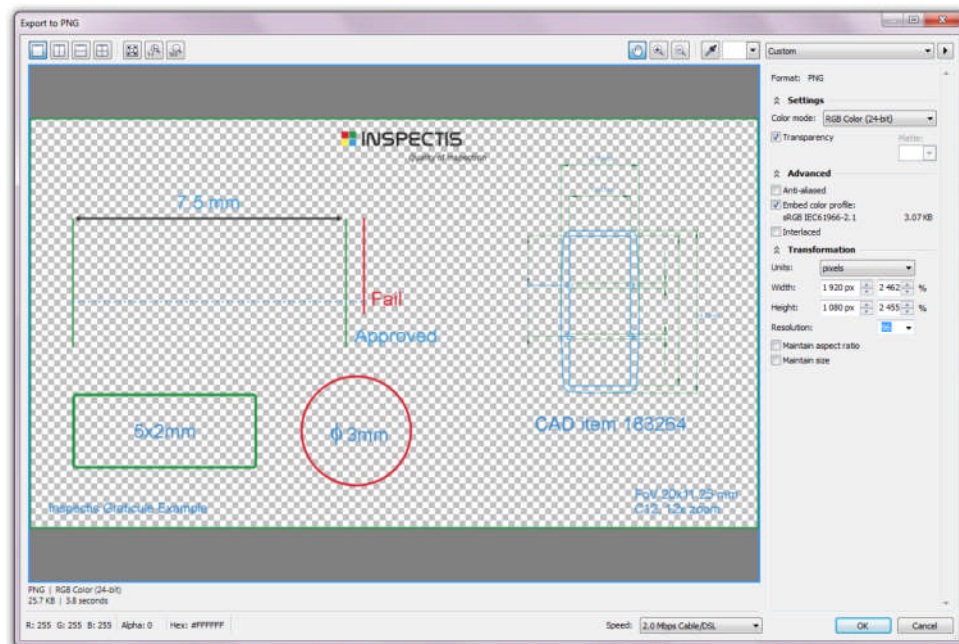
7. When your drawing is completed, save the file and follow the next steps to export it to a transparent **PNG** file.

Exporting Graticule to PNG

It is important to export PNG image with transparent background. In addition, final image size shall be exactly same as image format of your Digital Microscope e.g. 1280x720, 1920x1080 or 3840x2160 depending on resolution of your Video Capture Adapter.

1. Click *File->Export*
2. Set the desired name and destination folder. Set *Save type: PNG*. Click *Export*. *Export to PNG* window will be displayed.

3. Set the transparency and format of the PNG file in the *Export to PNG* window as follows.



Note: Select right unit and format of your graticule file. Unit shall be “pixels” and format shall be same as resolution of your Video Capture adapter. If C12 with HDMI-USB3.0 adapter then format is **1920x1080**.

4. Set PNG settings as:
 - a. *Transparency* is selected.
 - b. *Transformation Units*: pixels
 - c. Width and height: same with resolution of your Digital Microscope
 - d. *Resolution* is set to 96dpi.
5. Click OK. The exported PNG picture is ready to be used in INSPECTIS.

Note: You can find this Overlay file sample saved at different formats on Installation memory stick supplied with Inspectis software.